

Overview

KS2 Attainment 2017 · Actual results

30 pupils

KS2 Progress 2017 · Value Added

27 matched pupils

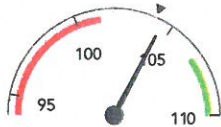
Average Scaled Score (Re, Ma)

% Expected standard+ (Re, Wr, Ma)

Average Scaled Score (Re, Ma)

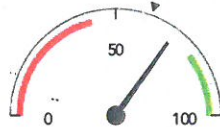
% Expected standard+ (Re, Wr, Ma)

104.5



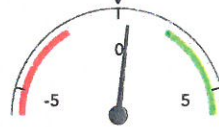
In line with the national average (104.1) ◀

70%



In line with the national average (61%) ◀

+0.4



In line with the national average (0) ◀

+8%



In line with the national average (0%) ◀

KS2 performance summary

| | Actual results | | | Pupil progress | | |
|--|---|---|--|--|---|------|
| | 2015 | 2016 | 2017 | 2015 | 2016 | 2017 |
| Number of Pupils / % Matched | 27 | 30 | 30 | 93% | 97% | 90% |
| % Expected standard+ (Re, Wr, Ma) | 78% + | 67% | 70% | +6% | -2% | +8% |
| % Higher standard (Re, Wr, Ma) | 22% + | 17% + | 7% | +8% | +7% | -2% |
| Average Scaled Score (Re, GPS, Ma) | 107.2 + ↑ | 106.5 + | 105.1 | +1.9 + | +0.9 | +0.5 |
| Average Scaled Score (Re, Ma) | 106.9 + | 106.6 + | 104.5 | +1.8 | +1.3 | +0.4 |
| % Expected standard+ Reading | 89% + | 87% + | 77% | +9% | +5% | +4% |
| % Higher standard Reading | 33% | 40% + | 17% ↓ | +2% | +11% | -7% |
| Scaled Score Reading | 109.1 + ↑ | 106.9 + | 103.4 ↓ | +3.5 + | +1.5 | -0.4 |
| % Expected standard+ Writing | 96% | 87% | 83% | +2% | -1% | +6% |
| % Higher standard Writing | 56% + | 30% + ↓ | 10% | +0% | +5% | -6% |
| Scaled Score Writing | - | 104.4 + | 102.0 | - | +0.6 | +0.5 |
| % Expected standard+ Maths | 81% | 77% | 83% | +3% | -4% | +7% |
| % Higher standard Maths | 30% | 33% + | 30% | +7% | +8% | +4% |
| Scaled Score Maths | 105.3 | 106.2 + | 105.5 | +0.1 | +1.0 | +1.1 |
| % Expected standard+ Grammar, Punctuation & Spelling | 96% + | 93% + | 87% | +11% | +7% | +9% |
| % Higher standard Grammar, Punctuation & Spelling | 56% + ↑ | 33% | 27% | +20% + | -3% | -2% |
| Scaled Score Grammar, Punctuation & Spelling | 110.5 + ↑ | 106.8 + ↓ | 105.8 | +3.2 + ↑ | -0.0 ↓ | +0.3 |
| % Expected standard+ Science | 96% | 97% + | 83% | - | - | - |
| Average Point Score (Re, Wr, Ma) | 30.7 + | - | - | +0.5 | - | - |
| % Level 4+ (Re, Wr, Ma) | 89% | - | - | -0% | - | - |
| % Level 4B+ (Re, Wr, Ma) | 85% | - | - | +4% | - | - |
| % Level 5+ (Re, Wr, Ma) | 41% | - | - | +4% | - | - |